

PASSIVE INFRARED DETECTOR
RX CORE SERIES
RXC-ST

EN INSTALLATION INSTRUCTIONS

- FR CONSIGNES D'UTILISATION
- DE INSTALLATIONSANLEITUNG
- IT ISTRUZIONI INSTALLAZIONE
- RU Инструкции по установке
- PT INSTRUÇÕES DE INSTALAÇÃO
- NL INSTALLATIE INSTRUCTIES
- ES INSTRUCCIONES DE INSTALACIÓN
- SE INSTALLATIONSANVISNINGAR
- PL INSTRUKCJA INSTALACJI
- KR 취급설명서

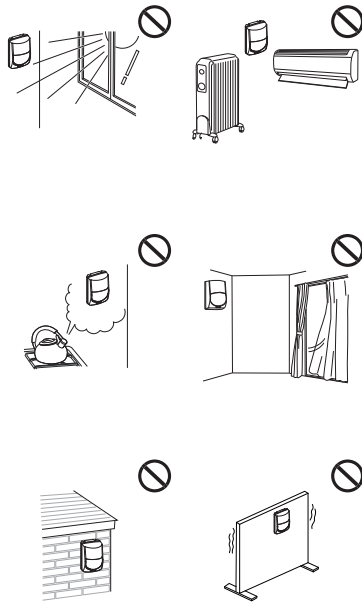
Warning

Warning

Caution

1 INSTALLATION HINTS

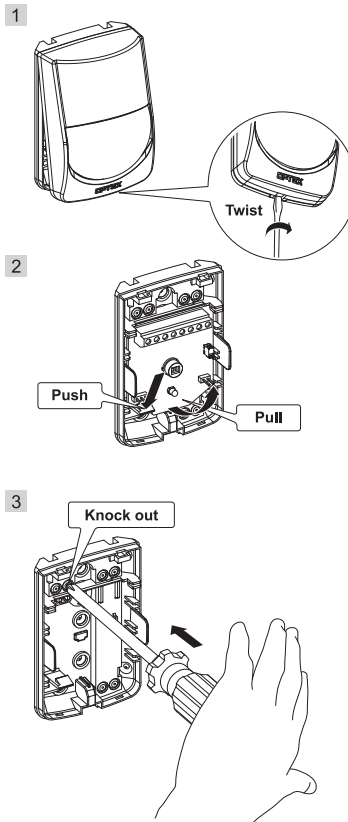
Conseils d'installation
Installations-Tipps
Indicazioni installazione
Принципы установки
Dicas de instalação
Installatietips
Recomendaciones de instalación
Tips vid installation
Wskazówki instalacyjne
설치시 주의사항



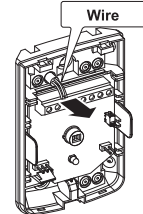
The nix sign indicates prohibition.

2 INSTALLATION

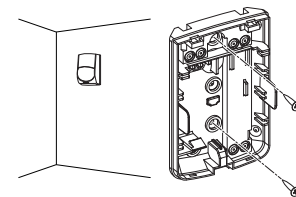
Installation
Installation
Installazione
Установка
Instalação
Installatie
Instalación
Installation
Instalacja
설치



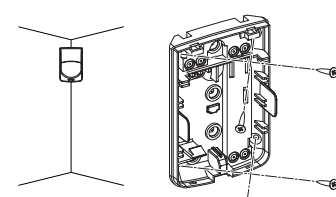
4



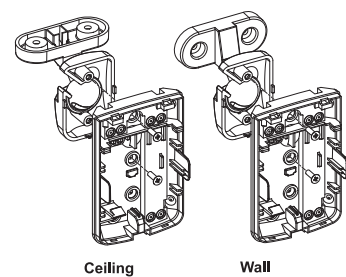
Backside mounting >>



Corner mounting >>



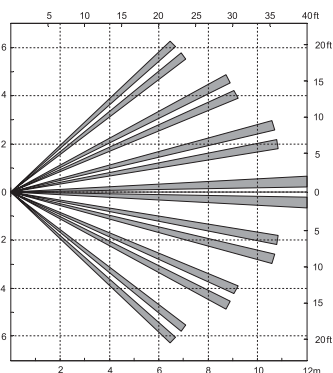
Bracket (included) mounting >>



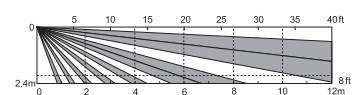
3 DETECTION ZONE

Zone de détection
Erfassungsbereich
Zone di rilevazione
Диаграммы направленности
Zona de detecção
Detectiezone
Zona de detección
Bevakningsområde
Charakterystyka Detekcji
검지 에어리어

■ TOP VIEW



■ SIDE VIEW



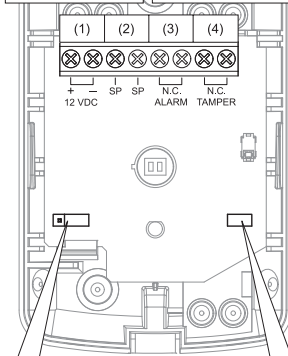
4 WIRING

Câblage
Verdrahtung
Impianto elettrico
Подключение
Fiação
Bedrading
Cableado
Inkopping
Okablowanie
배선

■ Power wire maximum length
(using one unit on a single wire)

WIRE GAUGE	12V DC	14V DC
AWG 22 (0.33mm ²)	520m (1700')	1130m (3700')
AWG 20 (0.52mm ²)	820m (2690')	1780m (5830')
AWG 18 (0.83mm ²)	1310m (4290')	2850m (9350')

(1)	(2)	(3)	(4)
Power input Alimentation Eingangslleistung Tensione di alimentazione Питание alimentação Voeding Entrada de alimentación Spänning Wejście zasilania 전원입력	Spare Pièce de rechange Ersatzteil Ritambi Резервный Reserva Reserve Contacto Libre Reserv Styk zapasowy 스페어	Alarm output (N.C.) Sortie d'alarme (N.C.) Alarmausgang (N.C.) Uscita allarme (N.C.) Тревожный выход (Н.З.) Alarm (N.C.) Saída do alarme (N.C.) Alarm (N.C.) Larmutgång (N.C.) Wyjście alarmowe (N.C.) 알람출력 (N.C.)	Tamper (N.C.) Autoprotection (N.C.) Manipulation (N.C.) Antiapertura (N.C.) Antiapertura (N.C.) Tamper (H.3.) Tamper (N.C.) Sabotage (N.C.) Interruptor contra sabotaje (N.C.) Sabotageutgång (N.C.) Styk sabotazowy (N.C.) 탐퍼 (N.C.)



5 SENSITIVITY AND LED

Sensibilité et LED
Empfindlichkeit und LED
Sensibilità e LED
Чувствительность и СИД
Sensibilidade e LED
Gevoeligheid en LED
Sensibilidad y LED
Känslighet och LED
Czułość i wskaźnik diodowy
감도 및 LED설정

SENSITIVITY

LED

6 WALK TEST

Test de marche
Gehtest
Test camminata
Проверка методом обхода
Teste de funcionamento
Looptest
Prueba de funcionamiento
Gångtest
Test przejścia
보행테스트

